



at&t

Quick start guide

SL82208/SL82308/SL82408

DECT 6.0 cordless

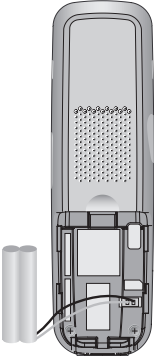
telephone/answering system

with caller ID/call waiting



Battery installation & charging

Install the battery as shown below. After installing the battery, you can make and receive short calls. For optimal performance, charge the handset battery for at least 16 hours before use. When fully charged, the handset battery provides approximately five hours of talk time and three days of standby time.



Step 1

Plug the battery securely into the plug inside the handset battery compartment, matching the color-coded label.



Step 2

Place the battery pack and wires inside the compartment.



Step 3

Align the cover flat against the battery compartment cover, then slide it upwards until it clicks into place

Step 4

Charge the handset, by placing the handset face up in the telephone base or in the additional charger. The **CHARGE** light will be on when charging.



IMPORTANT INFORMATION

1. Use only the supplied rechargeable battery or replacement battery (model BT8001). To order, visit our website at **www.telephones.att.com** or call **1 (800) 222-3111**. In Canada dial **1 (866) 288-4268**.
2. See the **Troubleshooting** section in the user's manual for charging issues.

Installation

Your product may be shipped with a protective sticker covering the handset or base display, remove it before use.

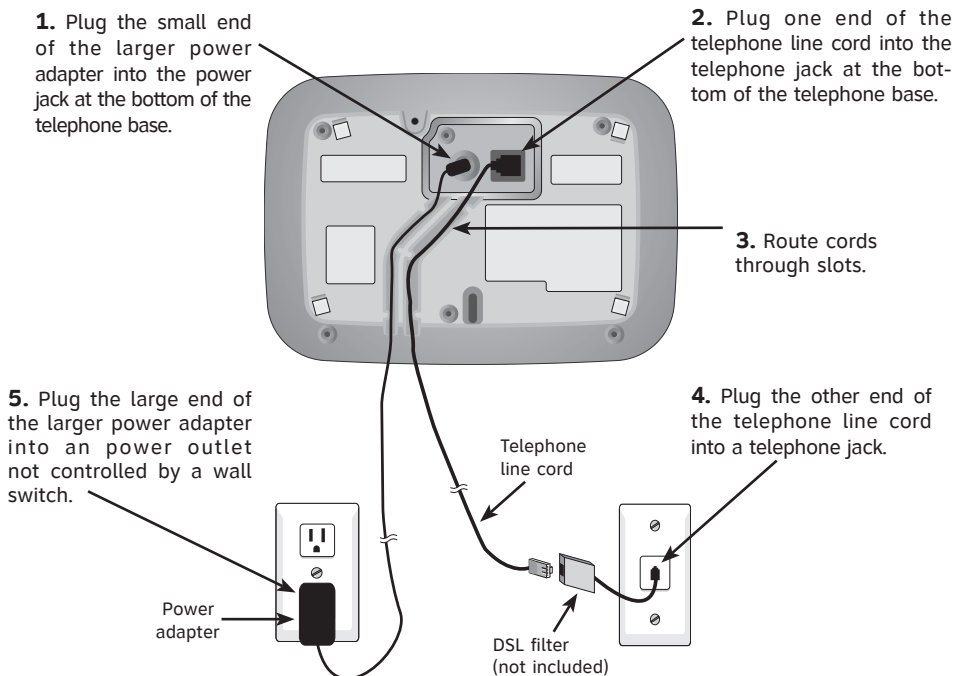
Install the telephone base close to a telephone jack and a power outlet not connected to a wall switch. The telephone base can be placed on a flat surface. For optimum range and better reception, place the telephone base in a high and open location.

Avoid placing the telephone base too close to:

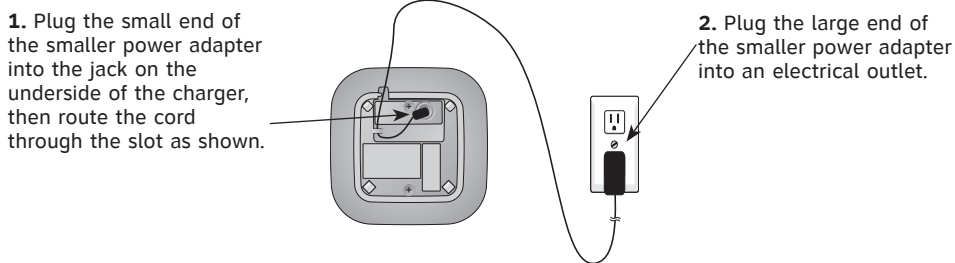
- Communication devices such as: television sets, VCRs, or other cordless telephones.
- Excessive heat sources.
- Noise sources such as a window with traffic outside, motors, microwave ovens, refrigerators, or fluorescent lighting.
- Excessive dust sources such as a workshop or garage.
- Excessive moisture.
- Extremely low temperature.
- Mechanical vibration or shock such as on top of the washing machine or work bench.

Telephone base and charger installation

Telephone base installation



Charger installation



IMPORTANT INFORMATION

1. Use only the power adapter supplied with this product. To order a replacement power adapter, visit our website at **www.telephones.att.com** or call **1 (800) 222-3111**. In Canada dial **1 (866) 288-4268**.
2. This power adapter is intended to be correctly oriented in a vertical or floor mount position.
3. If you receive high speed internet through your telephone line (commonly referred to as DSL), and you are experiencing interference during telephone conversations and/or your caller ID features are not functioning properly, install a DSL filter to the telephone line between the telephone base and the telephone wall jack. Contact your DSL provider for a DSL filter.

Quick reference guide

Handset



Press **DIR** to display directory entries. Press to scroll up while in menus. While entering names or numbers, press to move the cursor to the right.

Press **CID** to display caller ID information. Press to scroll down while in menus. While entering names or numbers, press to move the cursor to the left.

REDIAL/PAUSE

Press to view redial memory. While entering numbers, press and hold to insert a dialing pause.

PHONE/FLASH

Press to make or answer a call. During a call, press to receive an incoming call if call waiting is activated.

SPEAKER

Press to activate handset speakerphone. Press again to resume normal handset use.

MENU/SELECT

Press to display the menu. Once in the menu, press to select an item or save an entry or setting.

OFF/CLEAR

During a call, press to hang up. While using menus, press to cancel an operation, back up to the previous menu, or exit the menu display.

VOLUME

Press on the side of the handset to adjust listening volume when on a call. Press to adjust ringer volume when in idle mode.

MUTE/DELETE

While on a call, press to mute microphone. While reviewing the call log, press to delete an individual entry, or press and hold to clear the caller ID log. While predialing, press to delete digits.

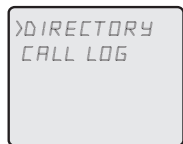
INT

Press to initiate an intercom conversation or transfer a call.



Feature menu

> Shows a highlighted item



Menu

Feature menu

DIRECTORY
CALL LOG
RINGER VOLUME
RINGER TONE
KEY TONE
LANGUAGE
CLR VOICE MAIL

Using menus

Press **DIR** or **CID** to scroll through menu items.

Press **MENU/SELECT** to select or modify a highlighted item.

Press **OFF/CLEAR** to cancel an operation, back up to the previous menu, or exit the menu display.

Quick reference guide

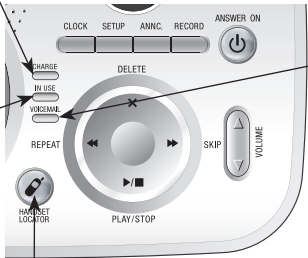
Telephone base

CHARGE

On when the handset is charging in the telephone base.

IN USE

- On when one of the handsets is in use or when the answering system is answering an incoming call.
- Flashes when another telephone is on the same line.
- Flashes quickly when there is an incoming call.



VOICEMAIL

Flashes when you have new voice mail. This service is provided by your local telephone company, (different from the answering system on the telephone base).

HANDSET LOCATOR

Press to initiate beeping to locate misplaced handsets.

SETUP

Press to hear setup options.

MESSAGE COUNTER

Displays number of messages (or during playback, message number currently playing).

ANNC

Press to review or record announcement; press again to quit.

CLOCK

Press to review or set clock.

RECORD

Press to record a memo or after pressing **ANNC** to record an outgoing announcement.

X/DELETE

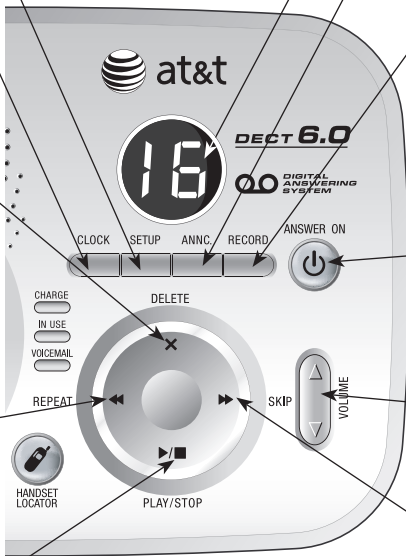
Press to delete message currently playing; press and you will hear a voice prompt to direct you to press the button again to delete all old messages in idle mode.

◀/REPEAT

Press to repeat message; press **twice** to play previous message.

▶/PLAY/STOP

Press to start or stop message playback.



ANSWER ON

Press to turn answering system on or off.

VOLUME

Press to adjust playback volume.

▶/SKIP

Press to skip message.



NOTE: For more information, please refer to the user's manual.



www.telephones.att.com