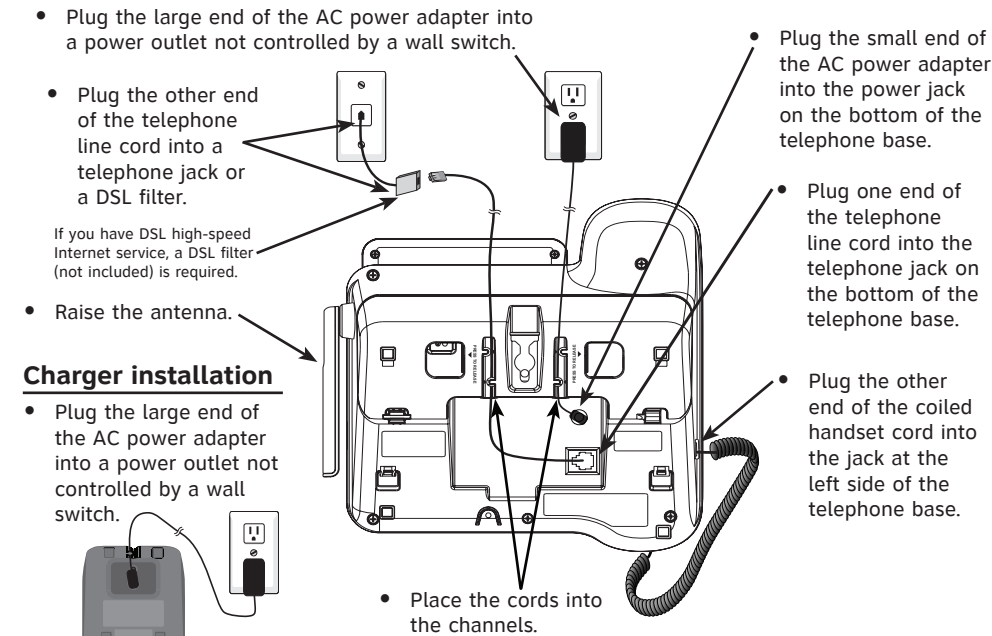




This quick start guide provides you with basic instructions only. For more detailed instructions, refer to your Abridged user's manual provided in the package, or see the online Complete user's manual at www.telephones.att.com/manuals.

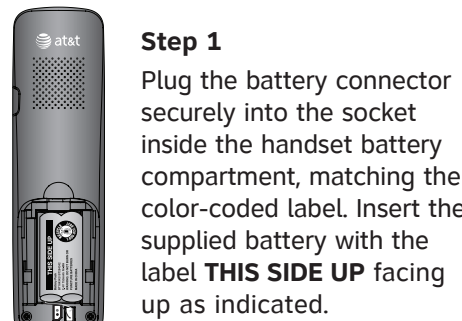
Telephone base installation



Caution: Use only the power adapter provided with this product. To obtain a replacement, visit our website at www.telephones.att.com or call **1 (800) 222-3111**. In Canada, dial **1 (866) 288-4268**.

Battery installation

Install the battery as shown below. Charge your handset(s) before initial use. The battery is fully charged after 16 hours of continuous charging.



CHARGE light

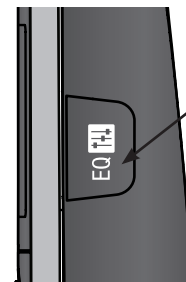


Step 3
Charge a cordless handset by placing it face forward in the charger. The **CHARGE** light on the top of the handset is on during charging.

Quick reference guide - handset



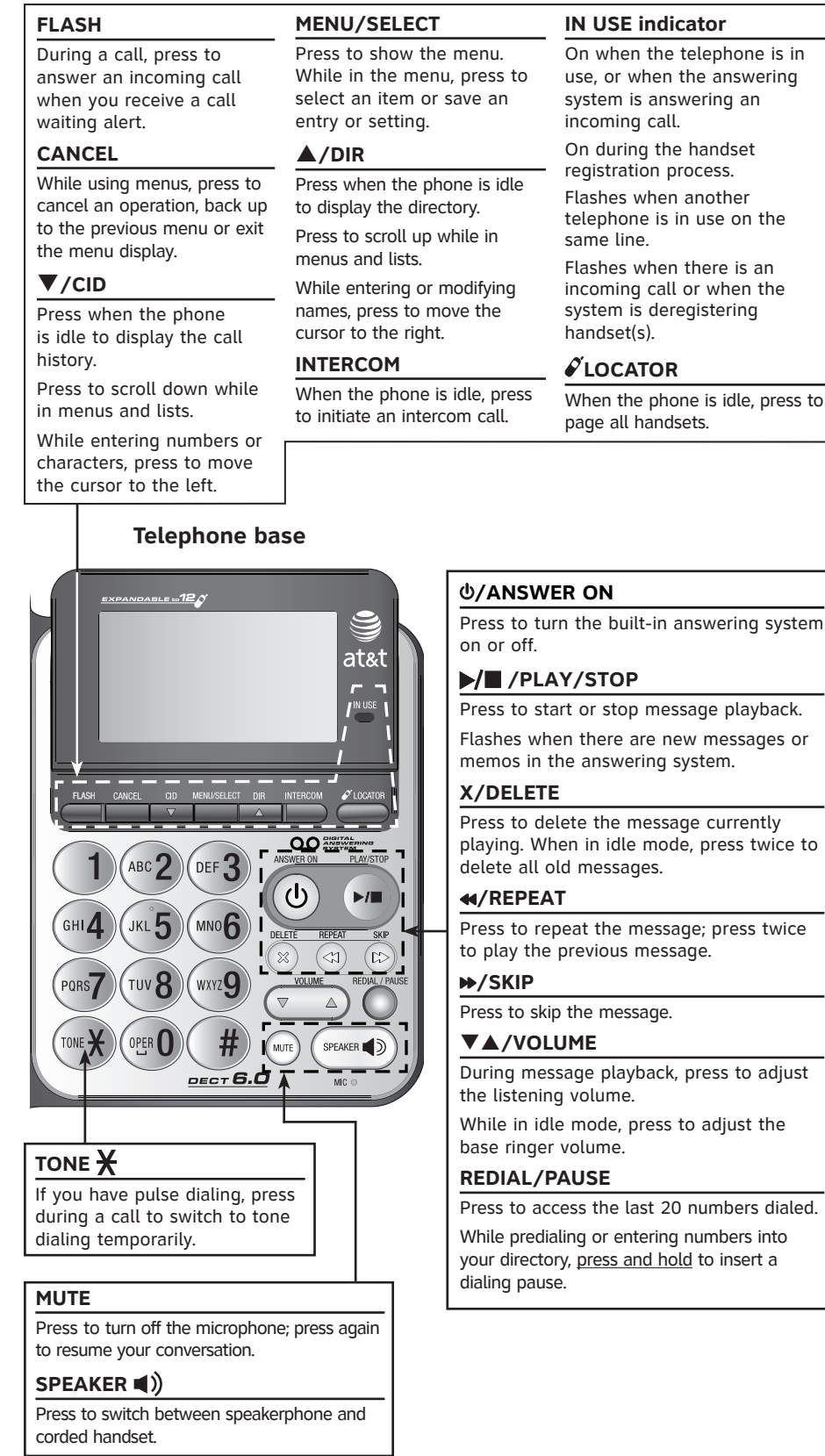
Handset side view



EQ EQ1

- During an outside call, intercom call, message or announcement playback, press to change the audio quality to best suit your hearing.

Quick reference guide - telephone base



Initial settings

We recommend you program your telephone system before use.

The following are a few examples of common features to set before using the telephone. Refer to the **Handset and telephone base settings and Answering system settings** in the Abridged user's manual or the online Complete user's manual for detailed instructions on setting all telephone features.

Set date/time

Set the date/time before using the answering system.

Using a cordless handset or the telephone base:

- MENU -> ▼ or ▲ -> Settings -> SELECT.
- ▼ or ▲ -> Set date/time -> SELECT.
- ▼ or ▲ -> Date & time -> SELECT.
- Enter the month, day and year using the dialing keys -> SELECT.
- Enter the hour and minute using the dialing keys.
- ▼ or ▲ to choose AM or PM -> SELECT.

Record your own announcement

Your outgoing announcement plays when calls are answered by the answering system. You can use the preset announcement to answer calls, or replace it with your own recorded announcement.

Using a cordless handset or the telephone base:

- MENU -> ▼ or ▲ -> Answering sys -> SELECT.
- SELECT to select Announcement.
- Press 7. After the tone, speak towards the handset or telephone base to record your announcement.
- Press 5 to end recording.

Number of rings

You can set the answering system to answer an incoming call after two, four, or six rings, or toll saver. If you choose toll saver, the answering system answers a call after two rings if you have new messages, or after four rings when there are no new messages.

If you want the built-in answering system instead of the voicemail to answer a call, you should set the answering system to answer a call at least two rings before the voicemail is set to answer. Contact your telephone service provider for information on your voicemail settings.

Using a cordless handset or the telephone base:

- MENU -> ▼ or ▲ -> Answering sys -> SELECT.
- ▼ or ▲ -> Ans sys setup -> SELECT.
- ▼ or ▲ -> # of rings -> SELECT.
- ▼ or ▲ -> Choose among 2, 4, 6 or Toll Saver -> SELECT.

Ringer volume

You can set the ringer volume level to one of the six levels or turn the ringer off.

Using a cordless handset or the telephone base:

- MENU -> ▼ or ▲ -> Ringers -> SELECT.
- SELECT to select Ringer volume.
- ▼ or ▲ to choose the desired level -> SELECT.

Language

If you want to change the display language, or you have accidentally changed the language and want to switch it back to English, follow the below steps.

Using a cordless handset or the telephone base:

- MENU -> ▼ 5 times -> SELECT twice.
- ▼ or ▲ to choose the desired language, or choose English if you want to change the display language to English -> SELECT.

Telephone operation

Operation	Steps
Making a call	<p>Using a cordless handset: Press \PHONE or Ⓜ/SPEAKER -> Enter the telephone number.</p> <p>Using the telephone base: Press SPEAKER Ⓜ or lift the corded handset -> Enter the telephone number.</p>
On-hook dialing (predialing)	<p>Using a cordless handset: Enter the telephone number -> Press \PHONE or Ⓜ/SPEAKER to call.</p> <p>Using the telephone base: Enter the telephone number -> Lift the corded handset or press SPEAKER Ⓜ.</p>
Answering a call	<p>Using a cordless handset: Press \PHONE or Ⓜ/SPEAKER, or press any dialing key (0-9, TONE ✕ or #).</p> <p>Using the telephone base: Lift the corded handset, press SPEAKER Ⓜ, or press any dialing keys (0-9, TONE ✕ or #).</p>
Ending a call	<p>Using a cordless handset: Press ⓄOFF or return the handset to the charger.</p> <p>Using the telephone base: Hang up the corded handset or press SPEAKER Ⓜ.</p>
Handset speakerphone	<p>Using a cordless handset: During a call, press Ⓜ/SPEAKER to switch between handsfree speakerphone and normal cordless handset use.</p> <p>Using the telephone base: During a call, press SPEAKER Ⓜ to switch between handsfree speakerphone and normal corded handset use.</p>
Redial	<p>Using a cordless handset: Press REDIAL repeatedly to select the desired entry -> \PHONE or Ⓜ/SPEAKER to call.</p> <p>Using the telephone base: Press REDIAL repeatedly to select the desired entry -> SPEAKER Ⓜ or lift the corded handset to call.</p>
Volume control	<p>Using a cordless handset: Press -VOLUME to decrease or press VOLUME+ to increase the listening volume during a call.</p> <p>Using the telephone base: Press ▼VOLUME to decrease or press VOLUME▲ to increase the listening volume during a call.</p>
Call waiting (Requires subscription from telephone service provider)	Press \FLASH on the handset or FLASH on the telephone base to put the current call on hold and take the new call; press again to switch back and forth between calls.

Caller ID

This product supports caller ID services offered by most telephone service providers. The telephone stores caller ID information of the last 50 incoming calls in the telephone base. This information is common to all devices.

Missed call indicator
<p>When a handset or the telephone base is in idle mode and has new or missed calls, its screen shows XX Missed calls.</p> <p>You can erase the missed call indicator either by reviewing the call log one by one, or by <u>pressing and holding</u> ⓄCLEAR on the handset or CANCEL on the telephone base in idle mode.</p>
Review and dial a number in the call log
<ol style="list-style-type: none"> CID in idle mode -> ▼ or ▲ to scroll through the list. While desired entry is displayed, press \PHONE or Ⓜ/SPEAKER on the cordless handset, SPEAKER Ⓜ on the telephone base, or lift the corded handset to call.

Directory

The directory can store up to 50 entries, which are shared by all system devices.

Operation	Steps
Adding an entry	<ol style="list-style-type: none"> MENU. ▼ or ▲ -> Directory -> SELECT. ▼ or ▲ -> Add contact -> SELECT. Enter a telephone number up to 30 digits -> SELECT. Enter a name up to 15 characters -> SELECT.
Searching/dialing an entry	<ol style="list-style-type: none"> DIR in idle mode. Press ▼ or ▲ to browse through the directory, or press the dialing keys (0-9) to start a name search. Press \PHONE or Ⓜ/SPEAKER on a cordless handset to call. <p>-OR-</p> <p>Lift the corded handset or press SPEAKER Ⓜ on the telephone base to call.</p>

Answering system

About answering system and voicemail
<p>Your telephone has separate indicators for two different types of voice messages: those left on the built-in answering system and those left at your telephone service provider's voicemail. To listen to messages recorded on the built-in answering system, refer to the Message playback section on the next page; to listen to voicemail, contact your telephone service provider for more information.</p>

Turn answering system on/off
<p>The answering system must be turned on to answer calls and record messages.</p> <p>Using a cordless handset:</p> <ol style="list-style-type: none"> MENU. ▼ or ▲ --> Answering sys --> SELECT. ▼ or ▲ --> Answer ON/OFF --> SELECT. ▼ or ▲ --> On or Off --> SELECT. <p>When the answering system is on, the handset shows ANS ON.</p> <p>Using the telephone base:</p> <ul style="list-style-type: none"> Press Ⓞ/ANSWER ON to turn the answering system on or off. If the answering system is turned on, it announces, <i>"Calls will be answered."</i> If the answering system is turned off, it announces, <i>"Calls will not be answered."</i>

Message alert tone
<p>When this feature is on, and there is at least one new message, the telephone base beeps every 10 seconds.</p> <p>Using a cordless handset or the telephone base:</p> <ol style="list-style-type: none"> MENU -> ▼ or ▲ -> Answering sys -> SELECT. ▼ or ▲ -> Ans sys setup -> SELECT. ▼ or ▲ -> Msg alert tone -> SELECT. ▼ or ▲ -> On or Off -> SELECT.

Call screening
<p>Use this feature to choose whether incoming messages can be heard over the telephone base when they are being recorded. If you turn call screening on, you hear the incoming message. While monitoring an incoming message, you can answer the call by pressing \PHONE or Ⓜ/SPEAKER on a cordless handset, lifting the corded handset or pressing SPEAKER Ⓜ on the telephone base.</p> <p>Using a cordless handset or the telephone base:</p> <ol style="list-style-type: none"> MENU -> ▼ or ▲ -> Answering sys -> SELECT. ▼ or ▲ -> Ans sys setup -> SELECT. SELECT to select Call screening. ▼ or ▲ -> choose On or Off -> SELECT.

Answering system (continued)

Message playback																					
<p>Using the telephone base: Press ▶/■/PLAY when the telephone base is in idle mode. If there are only new or only old messages, they are played automatically. If there are both old and new messages, press ▼ or ▲ --> Play new msgs or Play old msgs --> SELECT.</p> <p>Using a cordless handset: Press MENU twice when the handset is in idle mode. If there are only new or only old messages, they are played automatically. If there are both old and new messages, press ▼ or ▲ --> Play new msgs or Play old msgs --> SELECT.</p> <p>Options during playback</p> <table border="1"> <thead> <tr> <th>Feature</th> <th>On the telephone base</th> <th>On a handset</th> </tr> </thead> <tbody> <tr> <td>Adjust playback volume</td> <td>Press ▼▲/VOLUME</td> <td>Press -VOLUME or VOLUME+</td> </tr> <tr> <td>Stop playback</td> <td>Press ▶/■/STOP</td> <td>Press 5</td> </tr> <tr> <td>Skip to the next message</td> <td>Press ▶/■/SKIP</td> <td>Press 6</td> </tr> <tr> <td>Repeat the message</td> <td>Press ◀/REPEAT</td> <td>Press 4</td> </tr> <tr> <td>Play the previous message</td> <td>Press ◀/REPEAT twice</td> <td>Press 4 twice</td> </tr> <tr> <td>Delete the message</td> <td>Press X/DELETE</td> <td>Press 3 or DELETE</td> </tr> </tbody> </table>	Feature	On the telephone base	On a handset	Adjust playback volume	Press ▼▲/VOLUME	Press -VOLUME or VOLUME+	Stop playback	Press ▶/■/STOP	Press 5	Skip to the next message	Press ▶/■/SKIP	Press 6	Repeat the message	Press ◀/REPEAT	Press 4	Play the previous message	Press ◀/REPEAT twice	Press 4 twice	Delete the message	Press X/DELETE	Press 3 or DELETE
Feature	On the telephone base	On a handset																			
Adjust playback volume	Press ▼▲/VOLUME	Press -VOLUME or VOLUME+																			
Stop playback	Press ▶/■/STOP	Press 5																			
Skip to the next message	Press ▶/■/SKIP	Press 6																			
Repeat the message	Press ◀/REPEAT	Press 4																			
Play the previous message	Press ◀/REPEAT twice	Press 4 twice																			
Delete the message	Press X/DELETE	Press 3 or DELETE																			

For more detailed instructions, please refer to the Abridged user's manual provided in your package, or for a full set of installation and operation instructions, refer to the online **CL84100/CL84200/CL84250/CL84300/CL84350 DECT 6.0 corded/cordless telephone/answering system with caller ID/call waiting** Complete user's manual at www.telephones.att.com/manuals.

For customer service or product information, visit our website at www.telephones.att.com or call **1 (800) 222-3111**. In Canada, dial **1 (866) 288-4268**.